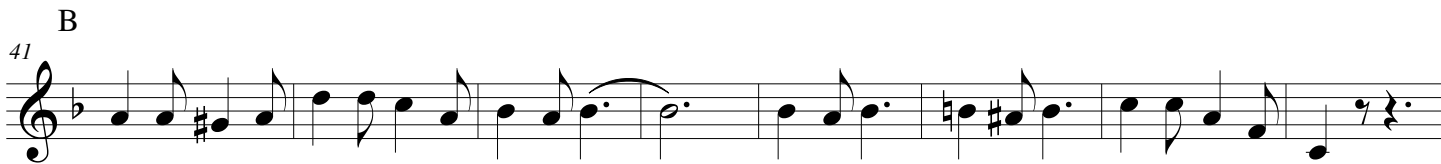


76 Trombones

Flute

Intro



57



Musical staff for Trombones 76, measures 57-64. The staff begins with a treble clef, a key signature of two flats, and a common time signature. The melody consists of eighth and quarter notes, with some notes beamed together. The key signature changes to one flat at measure 63.

65



Musical staff for Trombones 76, measures 65-71. This staff continues the melodic line with eighth and quarter notes. The key signature remains one flat.

Retour à A

72



Musical staff for Trombones 76, measures 72-76. Measures 72-74 feature a rhythmic pattern of eighth notes, while measure 75 has a quarter note followed by two eighth notes. Measure 76 concludes with a double bar line. The key signature remains one flat.